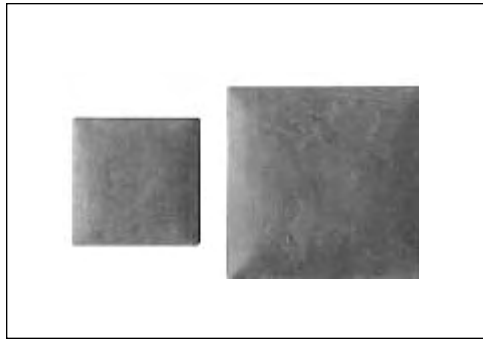




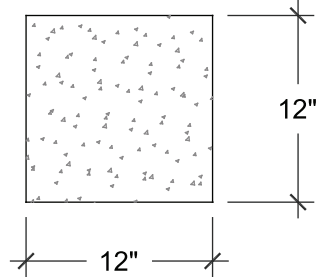
# TILES & PAVERS

SONOMA CAST STONE CORPORATION  
 Makers of NuCrete™, The World's Only Stainless Concrete  
 877.283.1897 • www.sonomastone.com



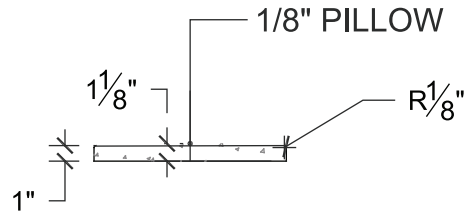
For more product info, or to download replacement forms, see: [www.sonomastone.com](http://www.sonomastone.com)

## SoftStone Tile/Pavers • Two Sizes

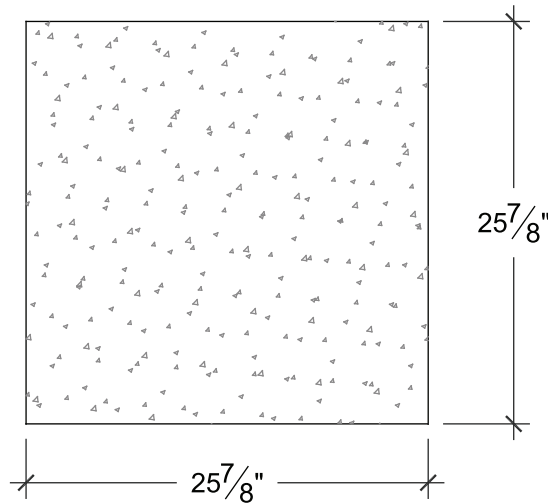


TOP VIEW

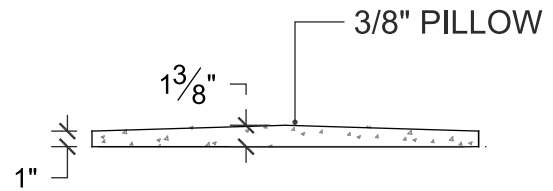
12 x 12 SOFTSTONE PAVER



SIDE VIEW



TOP VIEW



SIDE VIEW

Designs ©2007 Sonoma Cast Stone Corp. All rights reserved.

Visit [www.sonomastone.com](http://www.sonomastone.com) to see photos of this and other products.

### • DESCRIPTION

Pre-cast concrete pavers with pillowed top profile to replicate old world charm of a time worn pathway.

Available in two sizes with different shoulder heights and pillows for overall thickness. Each size ordered individually and not as a blend of sizes. See next page for available blend of sizes.

Suitable for pedestrian traffic using sand bed installation or over concrete substrate. For vehicular traffic, pavers must be applied to a concrete substrate.

It is important to note that control joints in the substrate should not be bridged by the pavers.

Refer to Tile Accessory page for pieces that compliment these tiles (p25).

### • FACTS

Tiles come in Classic Concrete in a mold release finish. As the term implies, tiles are "as is" when released from their molds.

Tiles are not diamond-sanded, sealed and waxed. (Optional)

Tiles are currently not available Stainless NuCrete™.

24 standard colors. See: [www.sonomastone.com](http://www.sonomastone.com), catalog or techbinder. Custom colors available. Order samples online, or call 877-283-2400 x113.

Tiles are unfinished and unsealed. Sealing by installer.

Thin-set mortar can be used to install tiles to solid, level substrate.