

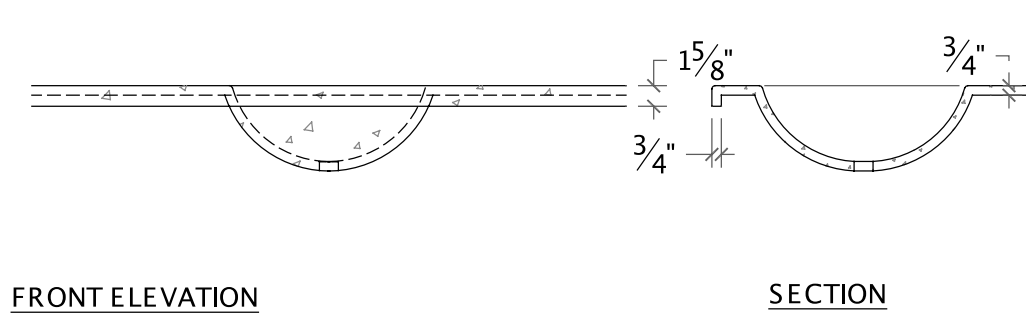
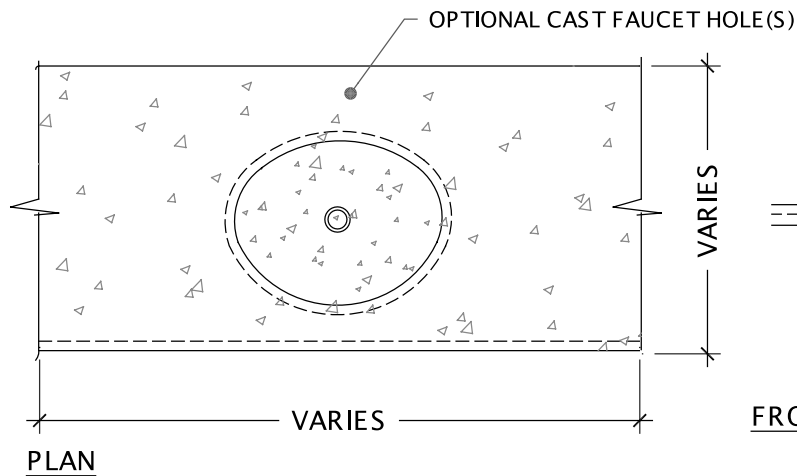


SONOMA CAST STONE / 877.283.2400

CUSTOM BATH PRODUCTS

Visit www.sonomastone.com to see photos.
Designs ©2009 Sonoma Cast Stone Corp. All rights reserved.

MODEL: INTEGRAL COUNTERSINK - ROUND & OVAL EXAMPLE



CUSTOM COUNTER WITH INTEGRAL COUNTERSINK



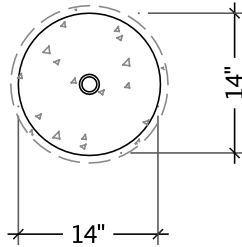
SONOMA CAST STONE / 877.283.2400

CUSTOM BATH PRODUCTS

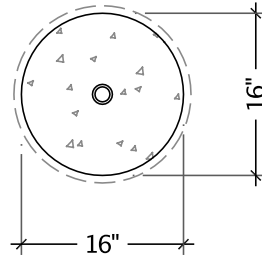
Visit www.sonomastone.com to see photos.
 Designs ©2009 Sonoma Cast Stone Corp. All rights reserved.

MODEL: INTEGRAL COUNTERSINK - ROUND & OVAL SIZES

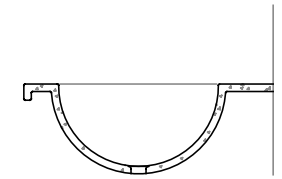
ROUND



CS-14D*[^]
 14" DIA. x 4 7/8" DEEP

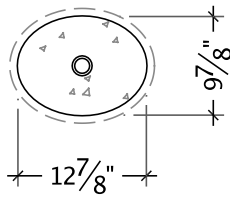


CS-16D*
 16" DIA. x 8" DEEP

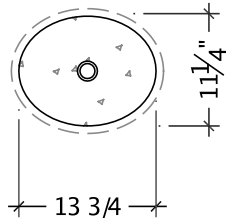


ROUND SINK SECTION

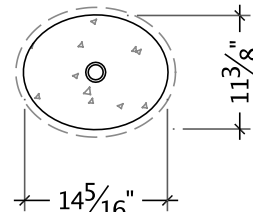
OVAL
 W/CENTER DRAIN



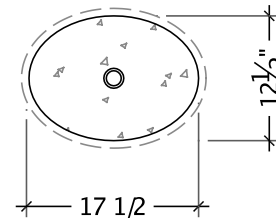
CS-1310[^]
 12 7/8" x 9 7/8" x 4 1/2"



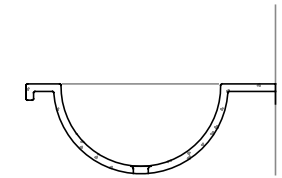
MODEL CS-1311[^]
 13 3/4" x 11 1/8" x 4 5/8"



MODEL CS-1411*
 14 5/16" x 11 3/8" x 5 7/8"

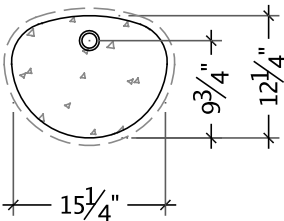


MODEL CS-1712*
 17 1/2" x 12 1/2" x 5 3/4"

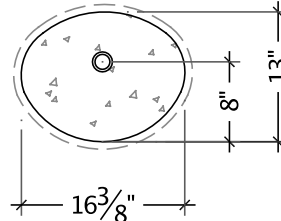


OVAL SINK SECTION
 W/CENTER DRAIN

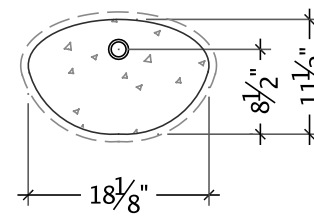
OVAL
 W/OFFSET DRAIN



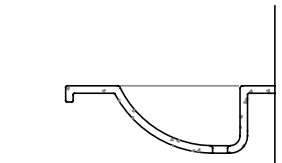
MODEL CS-1512
 15 1/4" x 12 1/4" x 5 3/4"



MODEL CS-1613
 16 3/8" x 13" x 5 1/2"



MODEL CS-1811
 18 1/8" x 11 1/2" x 5 7/8"



OVAL SINK SECTION
 W/OFFSET DRAIN

DIMENSIONS ARE INSIDE SINK

* THESE MODELS ARE AVAILABLE AS MULTI-SINK VANITIES

[^] THESE MODELS CAN COMPLY WITH A.D.A. STANDARDS