

TroughSink



Makers of NuCrete™
The World's Only Stainless Concrete



Allows as many as five faucets to flow into a common drain.

Our popular TroughSink turns your bathroom vanity into a beautiful piece of functional furniture. These integral sinks are designed to accommodate two to four faucets and are custom cast in your choice of 40 standard colors with the option of custom color.

The TroughSink is designed to float when supported by three walls, or it can fit on a conventional cabinet as shown at left. Our four basin sizes may be placed in any location on countertops up to eight feet in length.

- In Classic Concrete, diamond sanded, sealed and waxed or stainless NuCrete™.
- Can be mounted on standard cabinetry or “floated” between walls.
- Custom-made in a wide selection of colors.
- Models are available for commercial application.
- Most are ADA-compliant and are IAPMO listed.



TROUGH



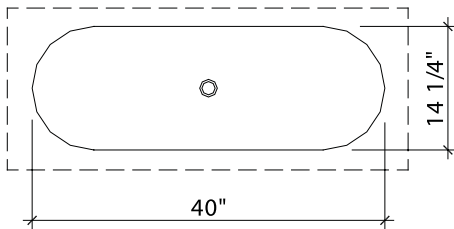
CUTSHEET

SONOMA CAST STONE CORPORATION
 Makers of NuCrete™, The World's Only Stainless Concrete
 877.283.2400 www.sonomastone.com

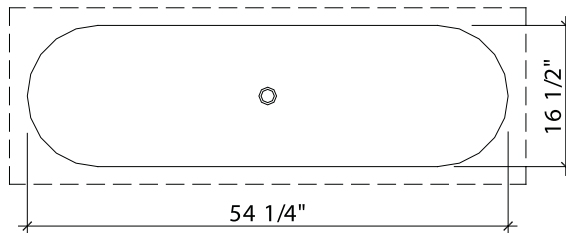


For more product info, or to download replacement forms, see: www.sonomastone.com

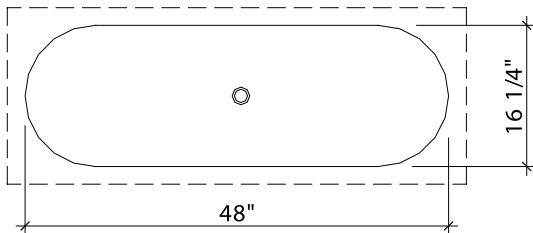
Custom TroughSinks • Residential



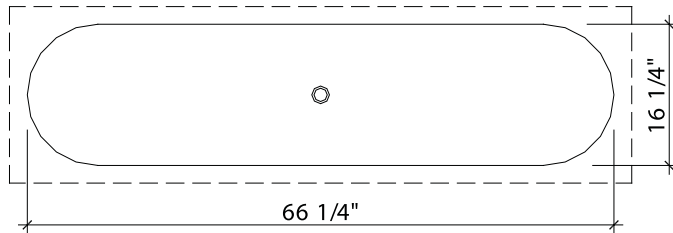
TS-1440 (1 OR 2 FAUCETS)



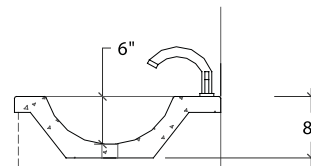
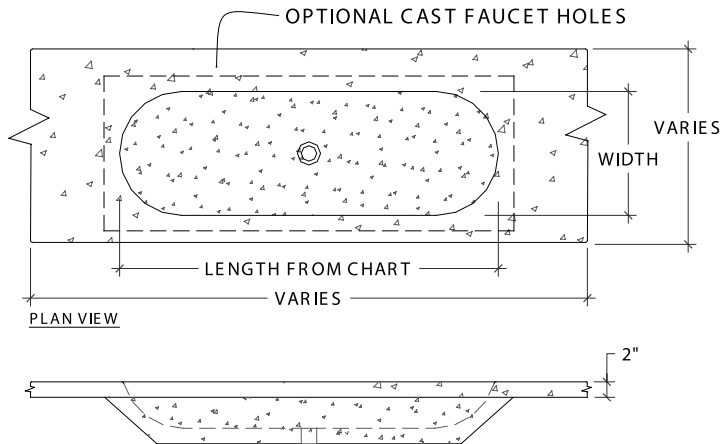
TS-1654 (1 OR 2 FAUCETS)



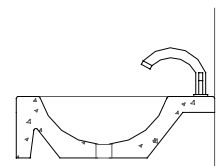
TS-1648 (1 OR 2 FAUCETS)



TS-1666 (1 - 3 FAUCETS)



SECTION W/ 2" FRONT EDGE



SECTION W/ 8" FRONT APRON

Designs © Sonoma Cast Stone Corp. 2006. All rights reserved.

• DESCRIPTION

Custom sized cast concrete countertop to your specifications with integral oval TroughSink, for two (or more) faucets. Drain recess accommodates most standard drain assemblies with extended threaded pipe. Sinks are standard sizes shown in chart below. Available in standard concrete diamond sanded, sealed, and waxed or stain free NuCrete™.

Sonoma Cast Stone also produces tiles, pavers, surrounds, and more. For photographs, visit www.sonomastone.com.

• FACTS

Comes standard in NuCrete™. Available in Classic Concrete. In any of our standard colors. Custom colors are available. See catalog or www.sonomastone.com for color charts. Call for material samples: 877.283.2400, x113

May be cabinet mounted or wall mounted. May use deck-mount or wall-mount faucets. Allow for thickened front apron on counters spanning more than 36" unsupported. Allow a min. of 3" each side of sink. Allow a min. of 5 1/2" at rear of sink for deckmount faucets. Allow a min. of 3 1/2" in front of sink for cabinet mounted applications. Aprons can be cast up to 8". Complies with IAPMO PS99-04