

ChefSink Island

Our majestic ChefSink on a hand-crafted, hardwood cabinet. Available with three drawers sliding underneath OR faux drawers to conceal a dishwasher. Storage underneath, left or right models available.



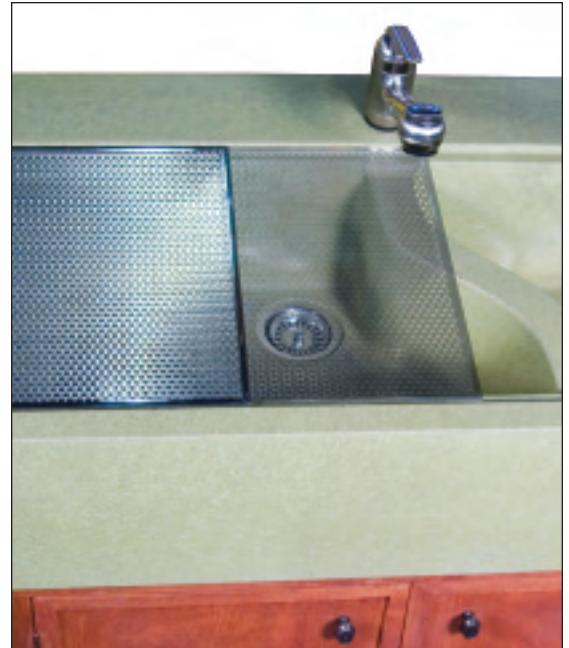
Makers of NuCrete™
The World's Only Stainless Concrete



First introduced at the San Francisco Decorators' Showcase, the ChefSink became so instantly popular that we have added it to our kitchen line.

Our unique perforated stainless steel bottom protects the sink from years of pot and pan abrasion, yet unlike a typical stainless sink, it will not scratch or dent. The stainless rinse board slides across the sink to act as a large strainer. It is everything that you could want. We have turned the kitchen sink into a fine piece of art...very functional art. The ChefSink is also made as a large single bowl with many options.

Want the ChefSink as a one compartment basin, with the drain on the other side, with more plumbing holes and with countertops to match? Call us for pricing.





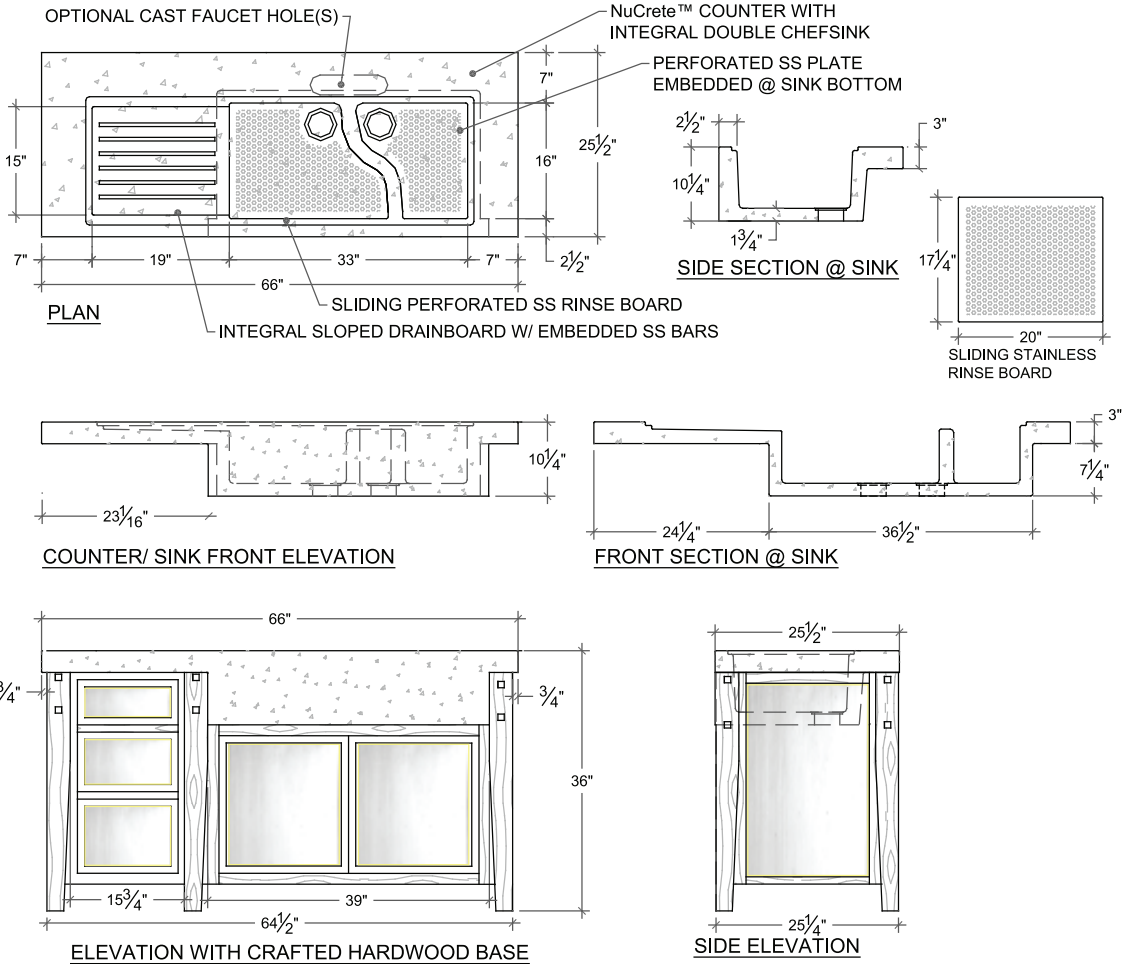
STANDARD PRODUCTS

SONOMA CAST STONE CORPORATION
 Makers of NuCrete™, The World's Only Stainless Concrete
 888.807.9117 • www.sonomastone.com



For more product info, or to download replacement forms, see: www.sonomastone.com

ChefSink Island w/Drawers CHF-ISL -66



Designs ©2007 Sonoma Cast Stone Corp. All rights reserved.

Visit www.sonomastone.com to see photos of this and other products.

• DESCRIPTION

Island Cabinet of hardwood construction in stained finish to accommodate our pre-cast concrete ChefSink with double basin cast into a standard size countertop. Three drawers with under sink storage area.

Also available with space for a hidden dishwasher instead of drawers (p35). Custom cabinetry designs with optional woods and finishes available.

See ChefSink page for more information (p34).

Left or Right hand models are available.

• FACTS

Hardwood cabinet with 3 drawers plus under sink storage area behind two matching doors. Handles and knobs are not included.

Interior of drawers in clear lacquer or stained finish.

Backside is also finished.

Approximate Weight: 740 lbs / Crated 1,270 lbs



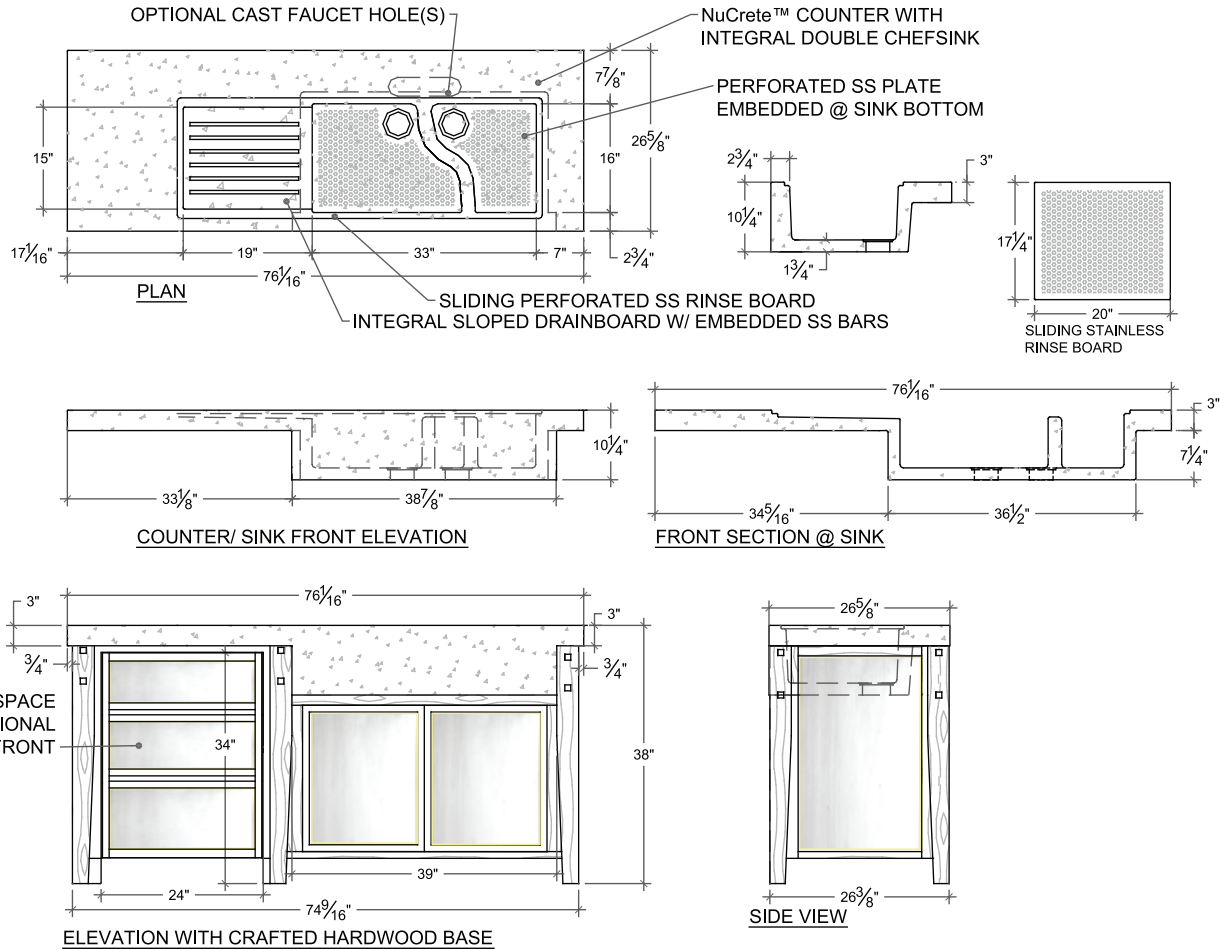
STANDARD PRODUCTS

SONOMA CAST STONE CORPORATION
 Makers of NuCrete™, The World's Only Stainless Concrete
 888.807.9117 • www.sonomastone.com



For more product info, or to download replacement forms, see: www.sonomastone.com

ChefSink Island w/Dishwasher CHF-ISLDW -76



Designs ©2007 Sonoma Cast Stone Corp. All rights reserved.

Visit www.sonomastone.com to see photos of this and other products.

• DESCRIPTION

Island Cabinet of hardwood construction in stained finish to accommodate our pre-cast concrete ChefSink. Space for dishwasher (by others) with under sink storage area behind two matching doors.

Also available with 3 drawers instead of space for a hidden dishwasher (p33). Custom cabinetry designs with optional woods and finishes available.

Left or Right hand models are available.

See ChefSink page for more information (p34).

• FACTS

Hardwood cabinet with space for dishwasher (by others) and under sink storage area behind two matching doors. Handles and knobs are not included.

Interior of drawers in clear lacquer or stained finish.

Backside is also finished.

Optional wood front to conceal dishwasher available.

For UPC (IAPMO) listing, see Appendix, p08-10.

Approximate Weight: 790 lbs / Crated 1,320 lbs