

NuCrete[™] CounterTiles[™]



Makers of NuCrete[™]
The World's Only Stainless Concrete

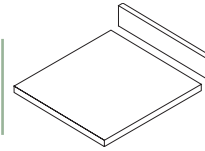


A good idea just waiting to happen.

It's an inexpensive and uncomplicated way to order magnificent, concrete countertops and an easy way to install them, all rolled into one. Throw in the matching backsplash, the design-to-fit CounterTile[™] FarmSinks in either NuCrete[™] or Stainless Steel, the beautiful Hardwood Cabinets we also make to complement our CounterTiles[™], and you can see why we're so excited about this product. Your CounterTiles[™] come with instructions that a handy homeowner can follow. Or your contractor will love how simple it is to install this beautiful material.



NuCrete™ CounterTiles™



Makers of NuCrete™
The World's Only Stainless Concrete



Far less expensive than custom countertops. Standard sizes made in bulk to reduce production expense and pass the savings to you, and... They come standard in Nucrete!

To Calculate Your Order

The standard kitchen countertop is 25.5" deep. Simply measure the length of your counter and divide by 24 to determine the number of tiles you need. There will often be one custom cut required for an exact fit.

To order back splashes, make the same calculation for the back and, if needed, the sides. Select your color, and use the money you just saved to buy one of our custom sinks!

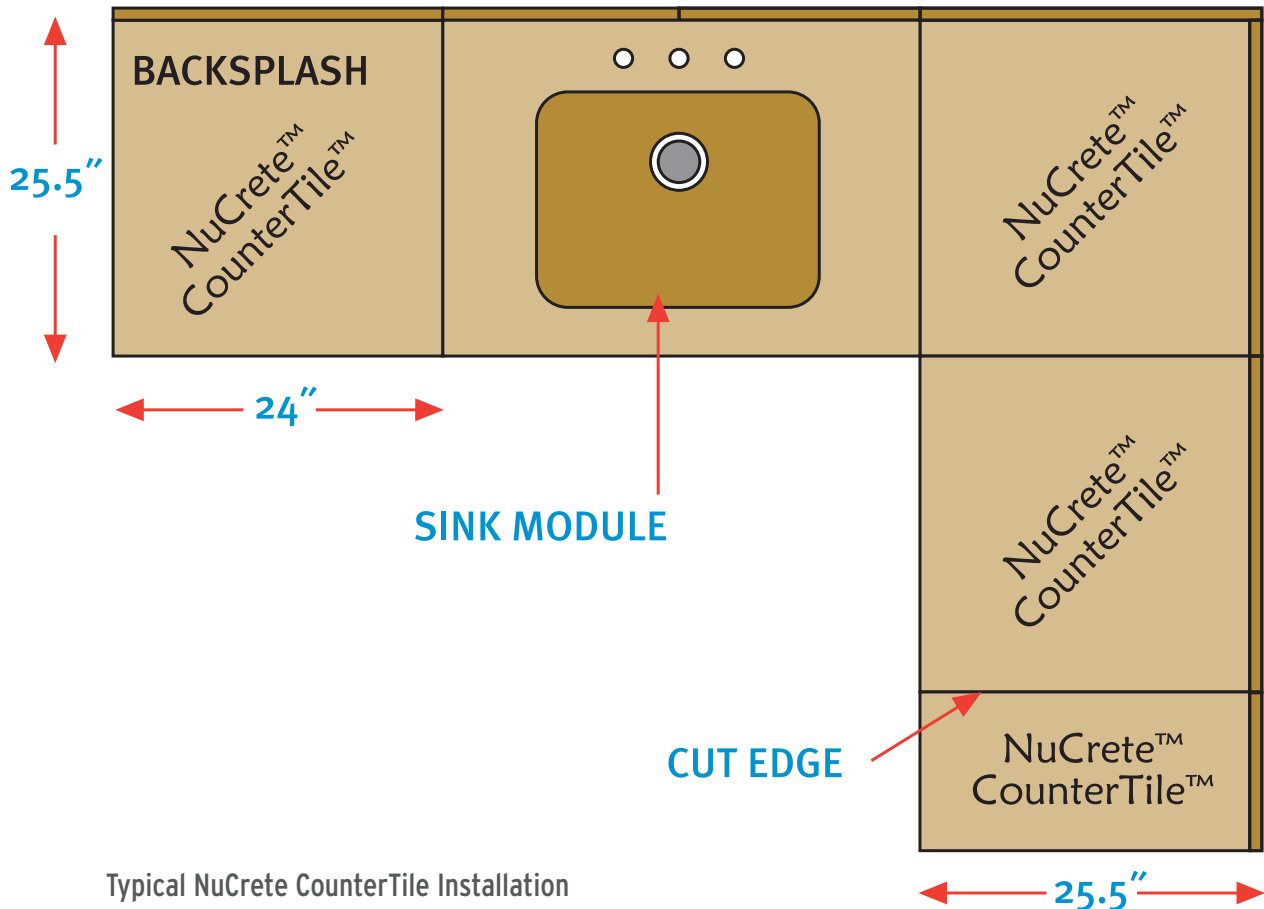
Simple as 1, 2, 3

Your CounterTiles come with instructions that a handy homeowner can follow. Or, your contractor will love how simple it is to install this beautiful material.

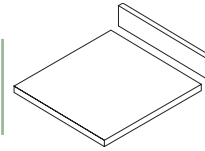
The CounterTile Module only has three pieces:

1. The basic tile: 24" x 25.5"
2. Optional Backsplash: 1" x 4" x 24"
3. Optional Sink Fixtures

We have a beautiful selection of farm sinks and special tiles for single or double bowl stainless undermount sinks. The sink is supplied with, and permanently mounted to, this special sink module. Ask about our newest sink - the AP Stainless Steel Sink.



NuCrete™ CounterTiles™



Makers of NuCrete™
The World's Only Stainless Concrete



Sonoma Cast Stone's CounterTiles should be installed by a qualified tile or countertop contractor following standard trade practices. A careful, handy homeowner can also achieve good results.

- In most cases cabinets should be supplied with continuous sub tops of rigid material, equivalent to min. 5/8" plywood in stiffness. This can usually be set in flush with the cabinet top to avoid edge treatment issues. Any finish carpenter can add these to (most) stock cabinets.
- In some installations it may be practical to substitute 1x4 front-to-back stringers, firmly fastened, under each CounterTile joint. This will support the tiles edges as well as provide backing for the grout joints.
- CounterTiles should be set in a bed of thin-set mortar, polyurethane construction adhesive, or silicone adhesive/sealant. For normal joints, leave a 1/16" to 1/8" gap between the tiles.
- Use a color matched sanded grout/ caulk between tiles. Some grout color matching suggestions are below. Alternatively, the CounterTiles may be butted closely and the joints sealed with silicone sealant.
- For light-use installations, consider merely placing the CounterTiles atop any cabinet. The joints between CounterTiles can be unsupported IF the counter will not be loaded with appliances, heavy pots, books, etc. You may place blobs of silicone caulk under each corner to secure, and use more silicone between the CounterTiles if desired.

Cutting

CounterTiles are steel rod reinforced around the perimeters inset at 2". Cutting with a diamond blade masonry saw, or preferably water-feed tile saw is highly recommended. Cutting slowly is also advised. If a masonry blade in a circular saw is used, place masking tape over cut area, mark the line on the tape, and make two or three passes with the saw.

Colored Grout Suggestions

NOTE: These color suggestions are close approximations, not perfect matches. Grout joints will be visible design elements. These tubes of color-matched Tile & Grout Caulk may be ordered from www.homesupplies4u.com and other suppliers.



COUNTERTILE™ COLOR	CORRESPONDING GROUT COLOR MATCH
N604 Porcelain	CUSTOMS #11 SNOW WHITE
N610 Earth	BONSAL #57 SABLE
N612 Butter	CUSTOMS #17 BUTTER CREAM
N602 Smoke	CUSTOMS #9 NATURAL GRAY



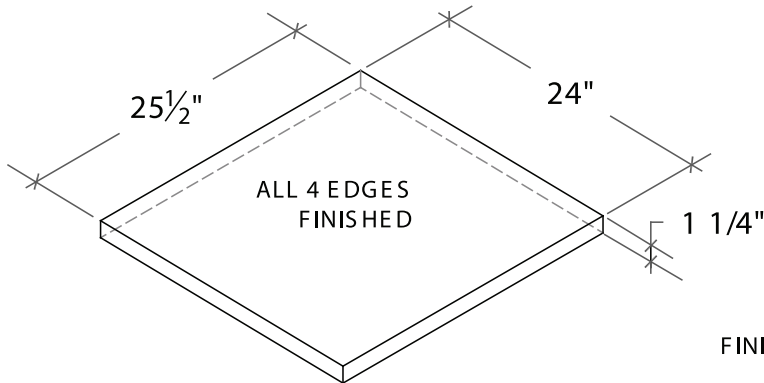
STANDARD PRODUCTS

SONOMA CAST STONE CORPORATION
 Makers of NuCrete™, The World's Only Stainless Concrete
 888.807.9117 • www.sonomastone.com

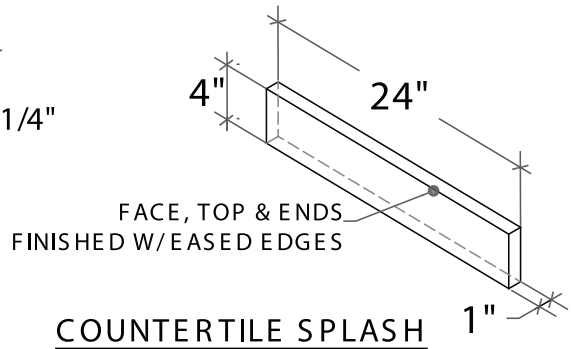


For more product info, or to download replacement forms, see: www.sonomastone.com

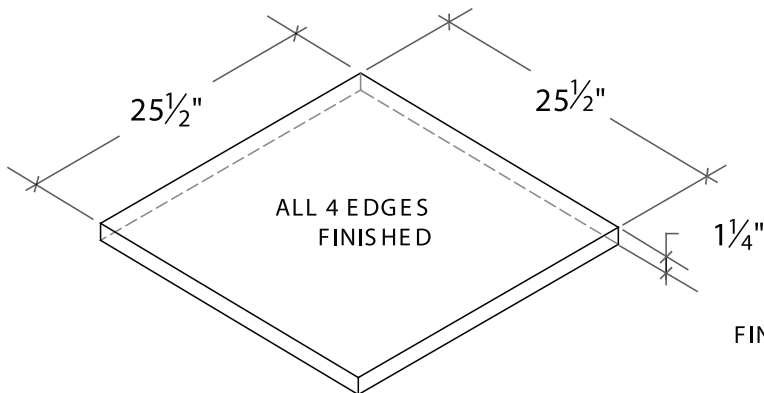
CounterTile™ CNTILES CNTILE-SPLSH



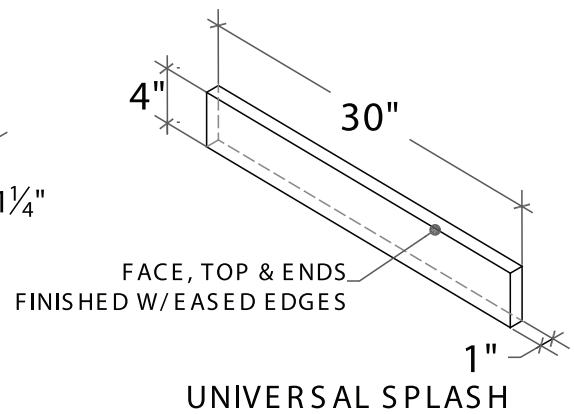
STANDARD TILE



COUNTERTILE SPLASH



CORNER TILE



UNIVERSAL SPLASH

Designs ©2007 Sonoma Cast Stone Corp. All rights reserved.

Visit www.sonomastone.com to see photos of this and other products.

• DESCRIPTION

CounterTiles™ offer the look and feel of concrete in the Kitchen at a fraction of the cost. The tiles are easy to install. A modular system consisting of a standard size tile to create running lengths of countertop. Optional matching splash available. To create a simple L-Shape, special corner tiles and splash are available. All items are standard in Stainless NuCrete™. To install, CounterTiles should be adhered to the cabinet frame with a silicone bead. Seams may be spread and grouted or butted and secured with color matched silicone bead. Tiles may be field cut for length only with wet tile saw.

Several sink options complete the system. A special tile also accommodates an undermount sink option. Call for recommended sizes and models.

• FACTS

Comes standard in Stainless NuCrete™ in four stock colors (N602 Midnight, N604 Porcelain, N610 Earth, N612 Butter). Custom colors are available - minimum order quantities apply.

For standard color palettes, see: www.sonomastone.com, catalog or techbinder. Order samples online, or call 877-283-2400 x113.

Finished Top and all four Sides with eased edges. Steel reinforcing bars are located 2" from perimeter. Caution if field drilling for faucet holes.

Field cuts for lengths accomplished with wet tile saw.

Approximate Weight: 60 lbs

SEE WWW.SONOMASTONE.COM FOR PHOTOS AND ADDITIONAL INFORMATION ON THIS PRODUCT



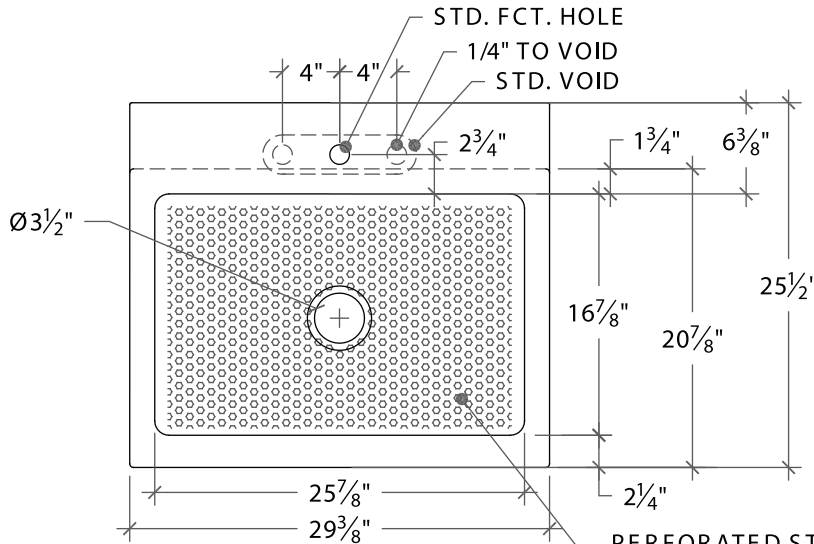
STANDARD PRODUCTS

SONOMA CAST STONE CORPORATION
 Makers of NuCrete™, The World's Only Stainless Concrete
 888.807.9117 • www.sonomastone.com



For more product info, or to download replacement forms, see: www.sonomastone.com

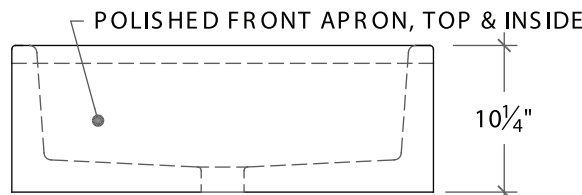
CounterTile™ Deluxe FarmSink CNTILE-DLX1726



PLAN

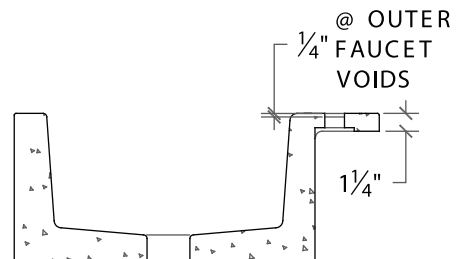


OPTIONAL 1" THICK BACKSPASH



FRONT ELEVATION

PERFORATED STAINLESS STEEL
 PLATE EMBEDDED @ BOTTOM



SECTION @ DRAIN

All FarmSinks have a Polished Interior, Front Apron, Top Edge and Sides to 3" from Front.

All Deluxe FarmSinks have a perforated Stainless Steel Mesh embedded into the cast sink.

Designs ©2007 Sonoma Cast Stone Corp. All rights reserved.

Visit www.sonomastone.com to see photos of this and other products.



• DESCRIPTION

Pre-cast concrete Deluxe FarmSink with integrated faucet deck at rear to coordinate with our kitchen CounterTiles™. Exposed surfaces are pre-finished and ready for installation.

Comes standard in Stainless NuCrete™.

The Deluxe CounterTile™ FarmSink comes with a perforated stainless steel inlay embedded in the concrete at basin bottom.

• FACTS

Comes standard in Stainless NuCrete™ in four stock colors (N602 Midnight, N604 Porcelain, N610 Earth, N612 Butter). Custom colors are available - minimum order quantities apply.

For standard color palettes, see: www.sonomastone.com, catalog or techbinder. Order samples online, or call 877-283-2400 x113.

Optional matching splash available.

Center faucet hole is standard. Voids for 8" faucet spread are cast to facilitate drilling.

Disposal flange and basket strainer in chrome included.

For UPC (IAPMO) listing, see Appendix, p08-10.

Approximate Weight: 240 lbs / Crated 350 lbs

SEE WWW.SONOMASTONE.COM FOR PHOTOS AND ADDITIONAL INFORMATION ON THIS PRODUCT



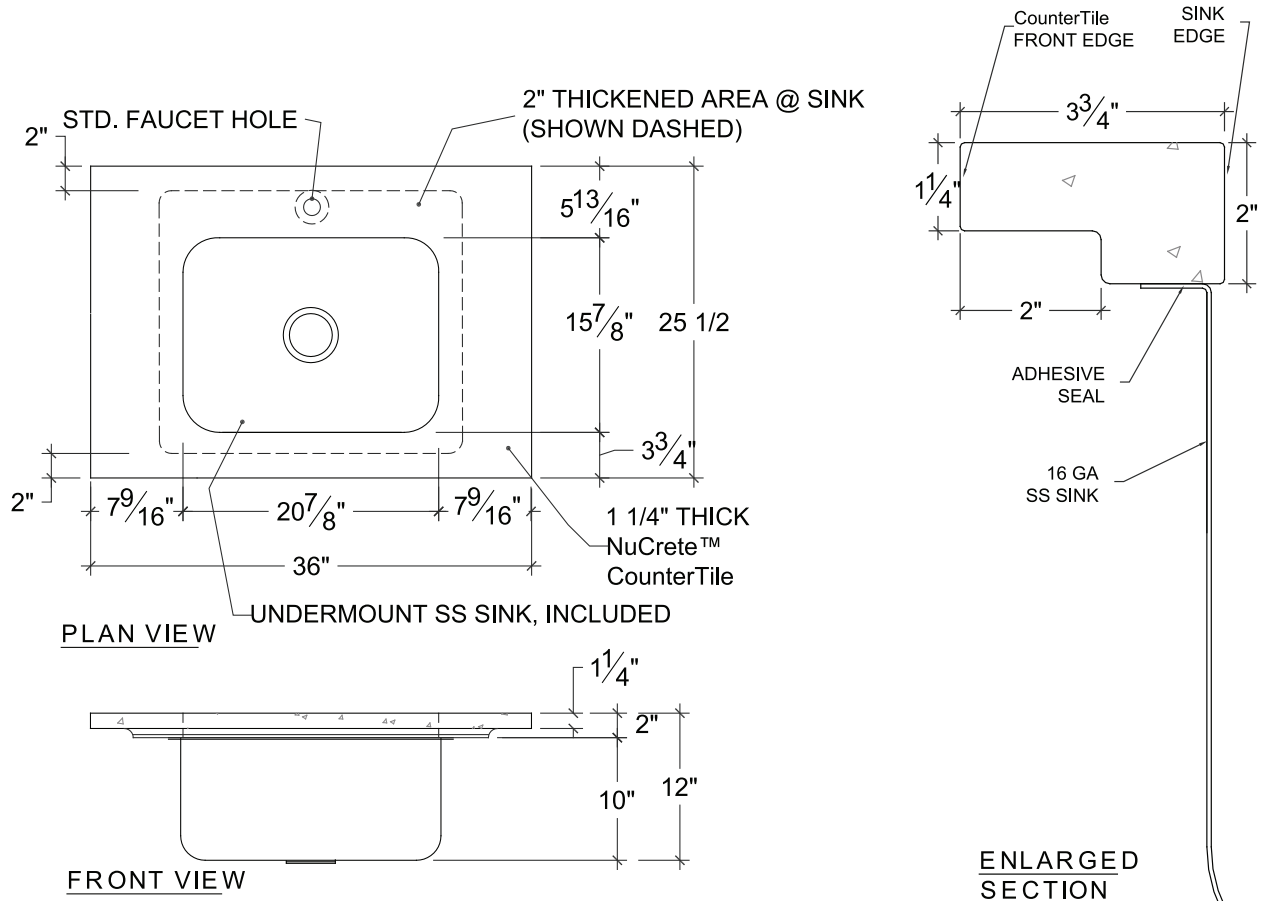
STANDARD PRODUCTS

SONOMA CAST STONE CORPORATION
 Makers of NuCrete™, The World's Only Stainless Concrete
 888.807.9117 • www.sonomastone.com



For more product info, or to download replacement forms, see: www.sonomastone.com

CounterTile™ Undermount Options A2318



Designs ©2007 Sonoma Cast Stone Corp. All rights reserved.

Visit www.sonomastone.com to see photos of this and other products.



• DESCRIPTION

Specially designed pre-cast concrete CounterTile™ to accommodate stainless steel undermount sinks. There are two sizes to choose from; a single (above) or double basin (following page) in heavy-duty 16 gauge.

• FACTS

- Comes standard in Stainless NuCrete™ in four stock colors (N602 Midnight, N604 Porcelain, N610 Earth, N612 Butter). Custom colors are available - minimum order quantities apply.
- For standard color palettes, see: www.sonomastone.com, catalog or techbinder. Order samples online, or call 877-283-2400 x113.
- Finished Opening, Top and all four Sides with eased edges. Steel reinforcing bars are located 2" from perimeter. Caution if field drilling for faucet holes.
- Field cuts for lengths accomplished with wet tile saw
- For UPC (IAPMO) listing, see Appendix, p08-10.

SEE WWW.SONOMASTONE.COM FOR PHOTOS AND ADDITIONAL INFORMATION ON THIS PRODUCT



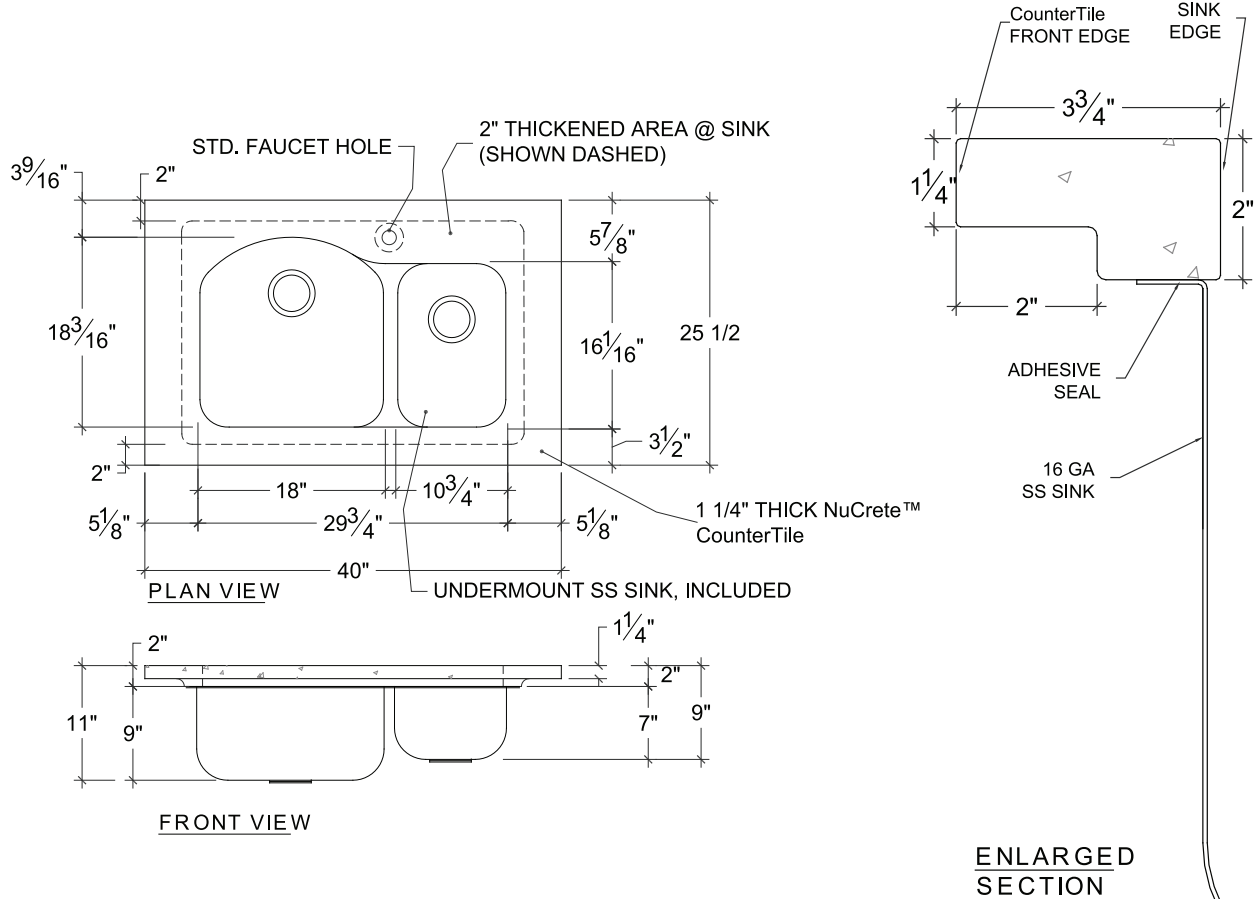
STANDARD PRODUCTS

SONOMA CAST STONE CORPORATION
 Makers of NuCrete™, The World's Only Stainless Concrete
 888.807.9117 • www.sonomastone.com



For more product info, or to download replacement forms, see: www.sonomastone.com

CounterTile™ Undermount Options A3220



Designs ©2007 Sonoma Cast Stone Corp. All rights reserved.

Visit www.sonomastone.com to see photos of this and other products.



• DESCRIPTION

Specially designed pre-cast concrete CounterTile™ to accommodate stainless steel undermount sinks.

There are two sizes to choose from; a single (previous page) or double basin (above) in heavy-duty 16 gauge.

Drawings above are for example only - please call factory for specifics.

• FACTS

Comes standard in Stainless NuCrete™ in 4 stock colors (N602 Midnight, N604 Porcelain, N610 Earth, N612 Butter). Custom colors are available - minimum order quantities apply.

For standard color palettes, See: www.sonomastone.com, catalog or techbinder. Order samples online, or call 877-283-2400 x113.

Finished Opening, Top and all four Sides with eased edges. Steel reinforcing bars are located 2" from perimeter. Caution if field drilling for faucet holes.

Field cuts for lengths accomplished with wet tile saw

For UPC (IAPMO) listing, see Appendix, p08-10.

Weight varies.

SEE WWW.SONOMASTONE.COM FOR PHOTOS AND ADDITIONAL INFORMATION ON THIS PRODUCT



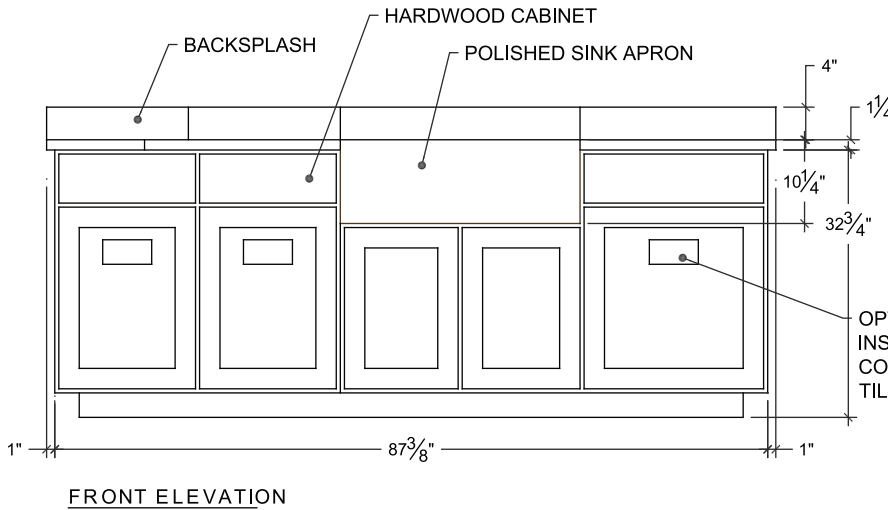
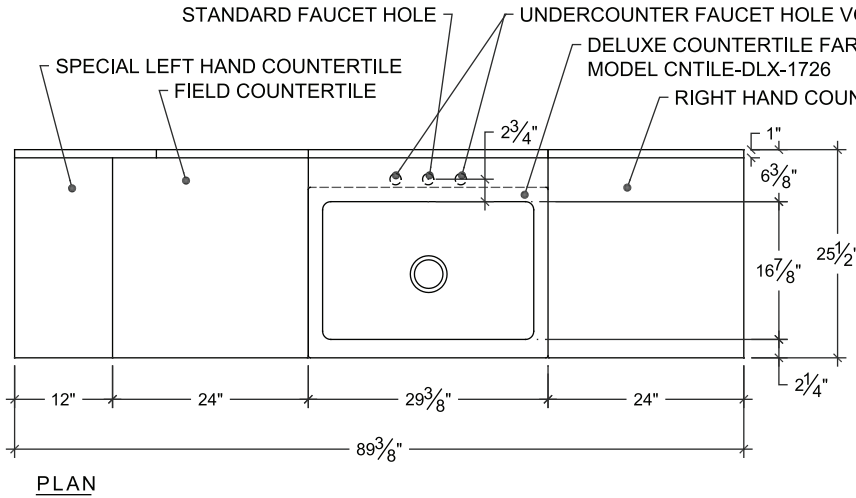
STANDARD PRODUCTS

SONOMA CAST STONE CORPORATION
 Makers of NuCrete™, The World's Only Stainless Concrete
 888.807.9117 • www.sonomastone.com



For more product info, or to download replacement forms, see: www.sonomastone.com

CounterTile™ Traditional Cabinet KC-TRA



Designs ©2007 Sonoma Cast Stone Corp. All rights reserved.

Visit www.sonomastone.com to see photos of this and other products.

• DESCRIPTION

Traditional style hardwood kitchen cabinet in stained finish for use with CounterTile™ system of tiles and a choice of a FarmSink in Stainless NuCrete™ (shown in drawing) or stainless steel sinks.

See separate FactSheets for each sink option.

• FACTS

Cabinets constructed in hardwood with stained finish. Handles/knobs not included.

For use with CounterTile™ countertop and matching CounterTile™ FarmSinks in Stainless NuCrete™ or stainless steel.

Approximate Weight: 510 LBS / Crated: 825 lbs (Cabinet only)

SEE WWW.SONOMASTONE.COM FOR PHOTOS AND ADDITIONAL INFORMATION ON THIS PRODUCT



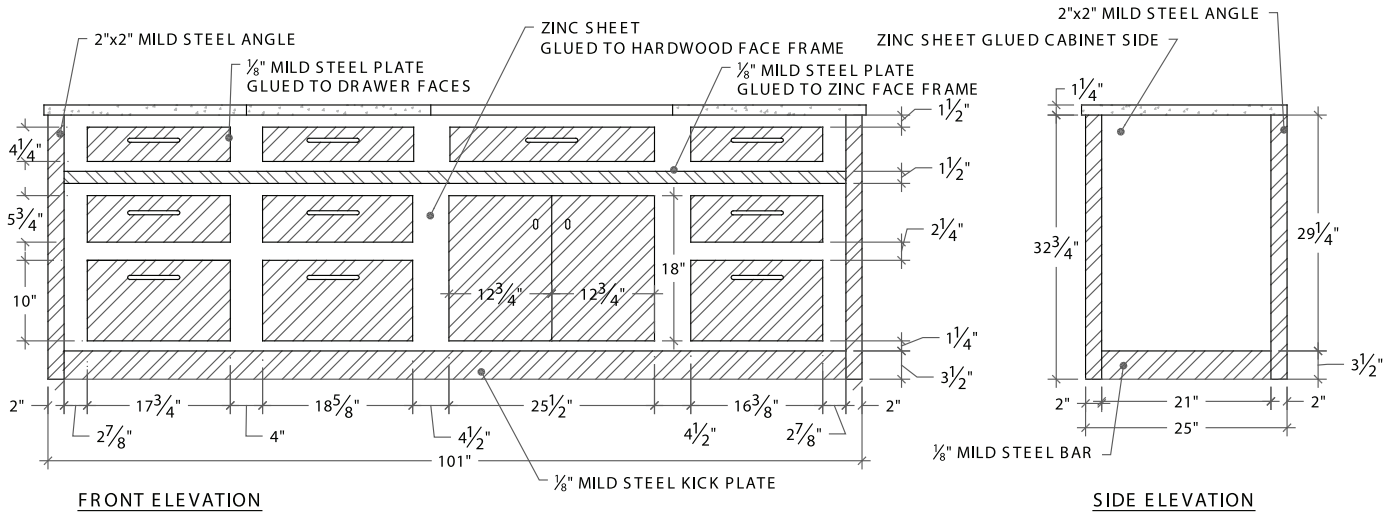
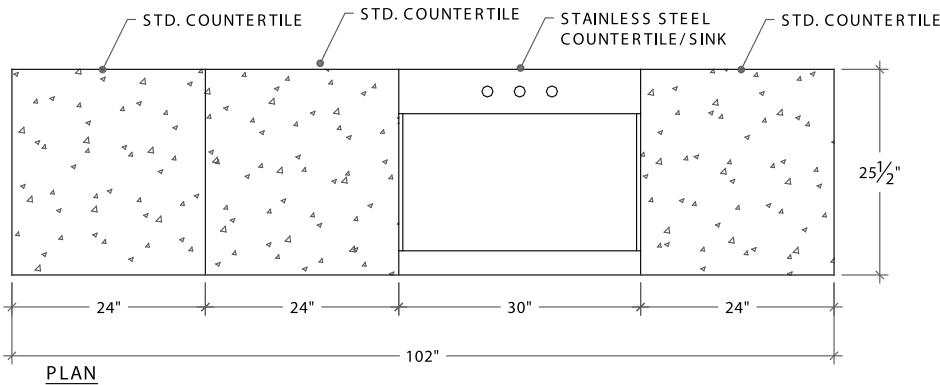
STANDARD PRODUCTS

SONOMA CAST STONE CORPORATION
 Makers of NuCrete™, The World's Only Stainless Concrete
 888.807.9117 • www.sonomastone.com



For more product info, or to download replacement forms, see: www.sonomastone.com

CounterTile™ Modern Cabinet KC-MOD



Designs ©2007 Sonoma Cast Stone Corp. All rights reserved.

Visit www.sonomastone.com to see photos of this and other products.

DESCRIPTION

Modern style Kitchen cabinet with zinc front with steel-faced drawers designed specifically for CounterTile™ products.

Can accommodate either sink unit option, Stainless NuCrete™ CounterTile™ FarmSink or stainless steel FarmSink (shown in drawing above).

See separate Fact Sheets for each sink option.

FACTS

Zinc faced cabinet with steel fronted drawers. Handles/knobs not included. Removable U-shaped magnet pulls available as an option. Interior of drawers in clear lacquer or stained finish. Backside is also finished.

Size shown in drawing for 3 Stainless NuCrete™ CounterTiles™ and choice of CounterTile™ Nucrete™ FarmSink or Stainless Steel FarmSink.

Optional matching back splash available.

Refer to CounterTile™ page for additional information.

Approximate Weight: 680 LBS / Crated: 1,020 lbs (Cabinet only)

SEE WWW.SONOMASTONE.COM FOR PHOTOS AND ADDITIONAL INFORMATION ON THIS PRODUCT